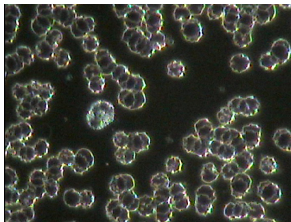


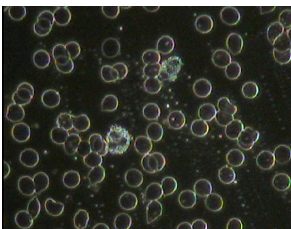
Fig. A: Blood sample taken before adjustments.



Facts: 1. Body condition: Bed ridden following stroke one and half years, had signs and symptoms of flu 4 to 5 days before.

2. Blood cells showing irregular shape and piling on top of each other, no much activity with white blood cells (through LCD microscope showing not much movement).

Fig. B: Blood sample taken after adjustments.



Facts: 1. Adjustments applied by three teachers after 30 minutes.

2. Red blood cells very active, the irregular shape of red blood cells changed to round and cells separating, oxygen transportation function elevated.

Adjustment applier: Shieh Kou Tai

Fig. A: Blood sample taken before applying adjustments.